

Data Connect



The only fully hosted, vendor-managed interoperability platform based on Ed-Fi® technologies.

Disconnected data systems, non-standard applications and redundant information creates a picture of complexity, cost and inefficiency for many schools – and stands in the way of optimal district and student performance. To add to that, many schools utilize point-to-point data integration solutions which lack the comprehensiveness and flexibility that districts require.

The Data Connect™ solution offers **secure, efficient and turnkey access to real-time bi-directional data integration**, resulting in true application interoperability.

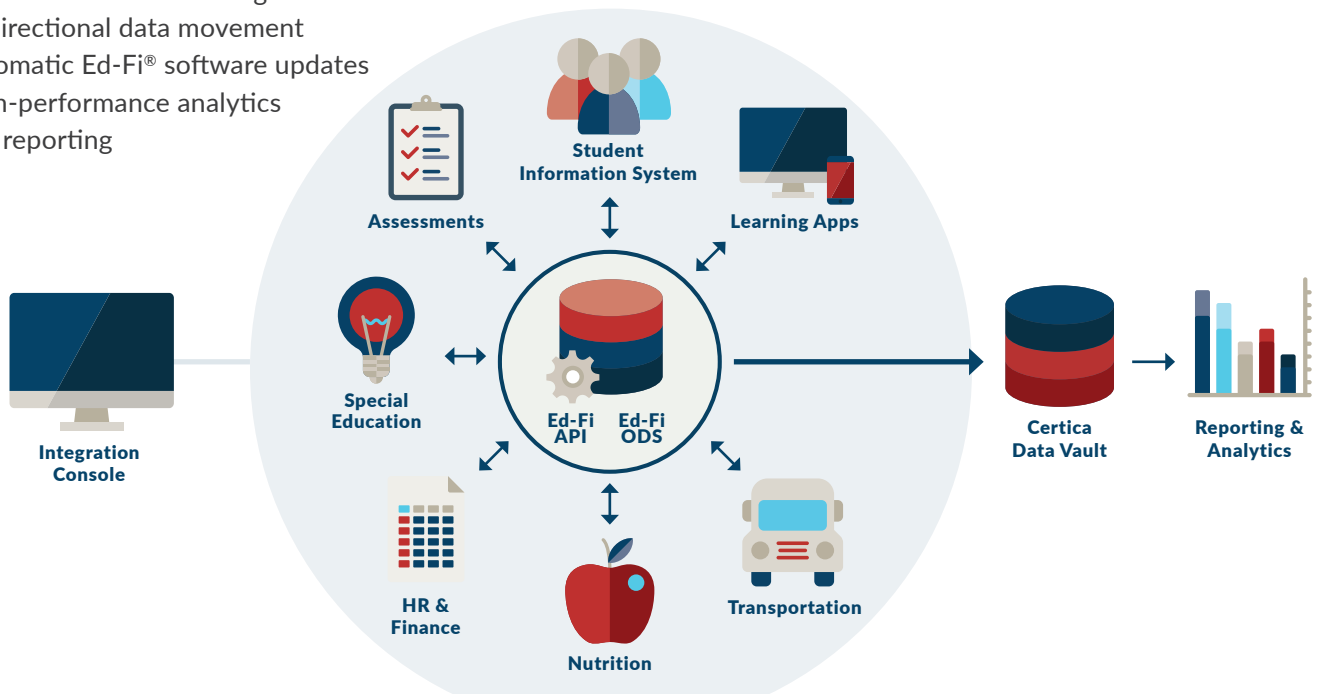
What is Ed-Fi and how does it work with Data Connect?

Ed-Fi is a suite of open-source technologies that delivers a K-12 education data model powering application interoperability.

Data Connect is based on Ed-Fi and offers districts hosting, updates and support—all in one low risk, low cost package. Districts don't need to train IT staff to be Ed-Fi experts and provide ongoing support – Certica does this for you.

DATA CONNECT INTEROPERABILITY PLATFORM

- Hosted and vendor-managed
- Bi-directional data movement
- Automatic Ed-Fi® software updates
- High-performance analytics and reporting



KEY FEATURES

Persistent ODS

The Data Connect interoperability platform is based on the Ed-Fi ODS, a centralized, persistent data store which houses integrated data without interruption.

Turnkey Access

Data Connect includes turnkey provisioning, support, Ed-Fi updates and integration management, in a fully hosted, vendor-managed platform. No custom Ed-Fi implementations or services engagements are needed, saving districts significant effort and expense.

Data Vault

The Certica Data Vault is a longitudinal database that is automatically generated from Data Connect. The Data Vault can be downloaded by a district and used for a district's analytic reporting and visualizations. Any number of analytic tools, data marts and reporting applications can leverage the historical data in the Data Vault.

Bi-Directional Data Movement

The Ed-Fi Technologies allow for real-time bi-directional data integration, enabling application interoperability across the K-12 enterprise.

Hub and Spoke Architecture

Data Connect offers a hub-and-spoke model which is a system of connections in which all spokes (applications) are connected to a hub (ODS). This approach gives school districts the ability to easily add and remove applications while maintaining a scalable IT infrastructure.

Integration Console

Data Connect includes a unique management console which enables districts and application providers to collaborate around their integrations, minimizing the complexity of Ed-Fi data integration. Districts can inventory applications, request new integrations and manage authorizations through the Integration Console.

THE DATA CONNECT ADVANTAGE

Data Connect is specifically designed for school districts seeking a proven approach to data integration and application interoperability, with low overhead and time-to-adoption. The hosted environment gives districts of all sizes the opportunity to save time, reduce costs and eliminate the risk of a large IT investment. Districts can focus their time on high-value projects instead of managing Ed-Fi updates, software updates, training or costly consulting engagements.

With Data Connect, your district will achieve seamless data integration and true application interoperability delivering accurate, actionable and real-time information to teachers, administrators, parents and students.

To learn more about Data Connect, visit CerticaSolutions.com, call **855.766.9916** (ext. 1) or email Sales@CerticaSolutions.com.

ABOUT CERTICA SOLUTIONS

Certica is the innovator of the Certica Connect™ Platform-as-a-Service which provides application interoperability and centralized integration, access and enrichment of education data, metadata and content. The company partners with a diverse network of K-12 application and system vendors, as well as learning content and assessment providers. Certica also delivers solutions directly to more than 600 school districts and numerous charter school organizations, state education agencies and educational service agencies.

Ed-Fi is a registered trademark of Ed-Fi Alliance, LLC.